



W2W ERRV Koeningsborg

TECHNICAL INFORMATION



W2W ERRV Koeningsborg

M/V "KOENIGSBORG" is a Walk to Work / Emergency Response & Rescue Vessel (ERRV-C). Ulstein design (PX121) and built (2015) as standard PSV in Ulsteinvik, Norway and converted by Royal Niestern Sander in 2021. The vessel is equipped with additional accommodation space totalling the amount of cabins to 22 single and 19 double cabins. The vessel is outfitted with the Ampelmann E-1000 motion compensated gangway which can lift up to 1000kgs. The main diesel electric propulsion system comprises of two azimuth thruster, one retractable thruster, and two bow thrusters. The vessel is equipped, built and certified according to IMO Class II for Dynamic Positioning

Purpose build vessel for offshore industry for maintenance and emergency response duties.

Large deck are for carriage of general cargo on open deck.

Accommodation total 60 in high comfort cabins

ERRV-B in accordance with MCA U.K.

Excellent DP performance due to the additional retractable thruster

MAIN DIMENSIONS

Length over all approx.	83,40 m
Beam	18,00 m
Depth to main deck	8,00 m
Design draught	6,00 m
Scantling draught	6,70 m

VESSEL CAPACITIES

Deck space	~650 m2
Fuel oil	1.446 m3
Fresh water	925 m3
Gross tonnage	4.197 t
DWT	4.065 t

CLASSIFICATION / FLAG

Bureau Veritas | Hull, Mach; Offshore support vessel; Unrestricted navigation; AUT-UMS; SDS; SPS (60); DYNAPOS AM/AT R; SYSNEQ-OSV; CLEANSHIP SUPER; COMF VIB (3), COMF-NOISE (3); ICE

ACCOMMODATION

- 19 double cabins, 22 single cabins
- 3 dayrooms, 1 smoke room
- 2 gyms, 2 change rooms
- 3 office rooms

ERRV-C

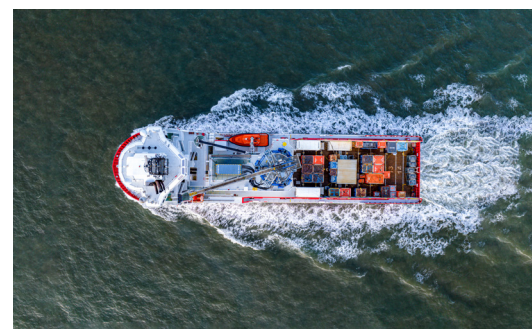
- Hospital & Treatment room
- Recovery Area & Sanitary Area
- Sanitary
- Ampelmann E-1000 with 1t lifting capacity
- Daughter Craft & DAVIT

DECK EQUIPMENT

- Ampelmann E-1000
- Deck crane: Knuckel boom shipboard crane 3 t at 18 m, telescopic boom 0,5 t at 21,5 m.
- 2 Mezzanine Decks

MACHINERY / PROP. SYSTEM

- Diesel electric power and propulsion plant:
- Two main generator engines, each of MCR 2350 bkW (2250 ekW/ 2500 kVA) at 1800 rpm
- Two main generator engines, each of MCR 994 kW (940 ekW / 1144 kVA) at 1800 rpm
- Two main azimuth thrusters, each 2200 kW
- Two Bow thrusters, each 880 kW
- One Retractable thruster 800 kW
- Emergency generator, 200 ekW - 250 kVA, 1800 rpm

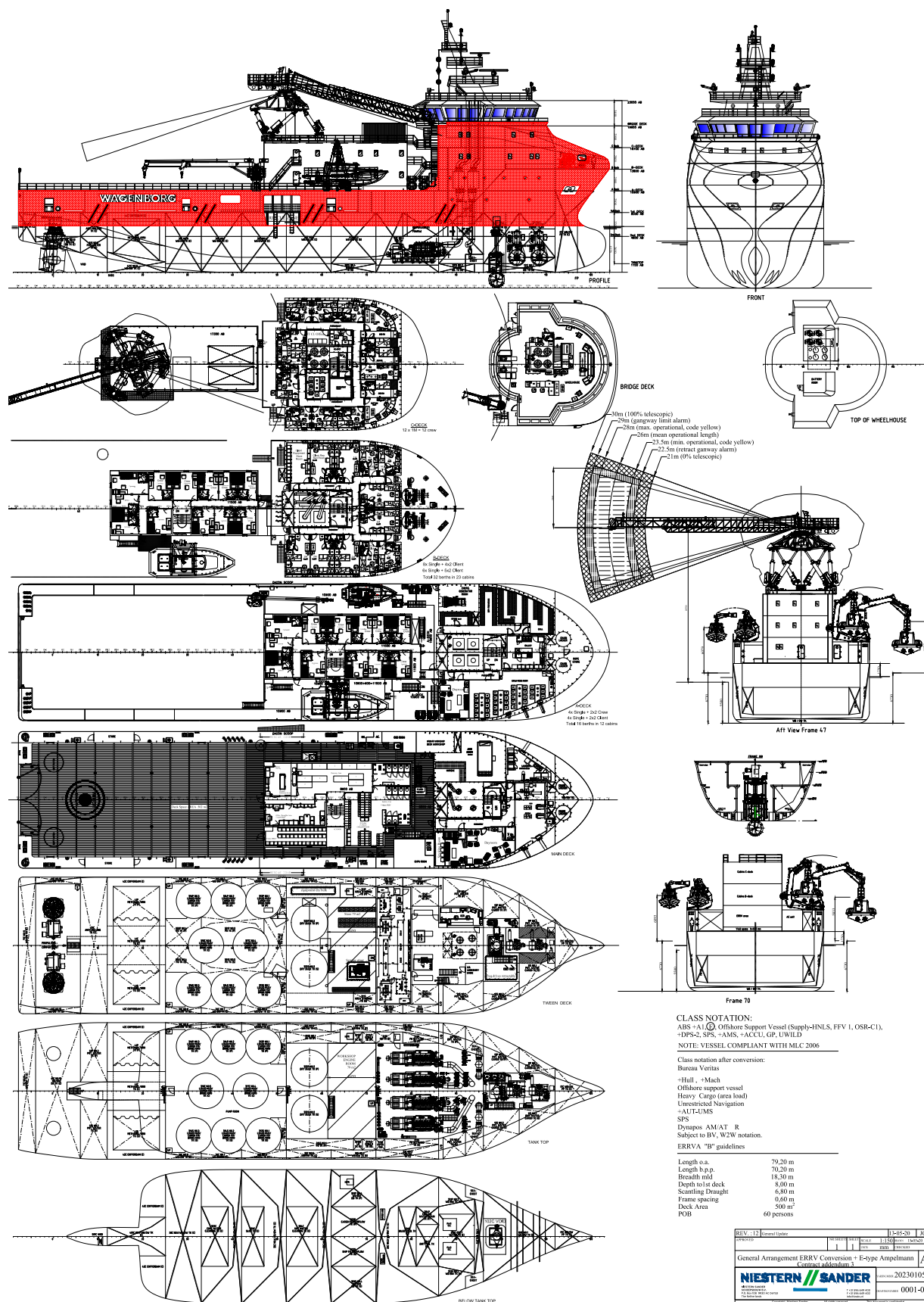


Wageningen Offshore

Marktstraat 10, 9934 CK Delfzijl, Netherlands | P.O. Box 14, 9930 AA Delfzijl, Netherlands
T +31 596 636 911 | E offshore.commercial@wageningen.com | wageningen.com



W2W ERRV Koeningsborg



Wagenborg Offshore

Marktstraat 10, 9934 CK Delfzijl, Netherlands | P.O. Box 14, 9930 AA Delfzijl, Netherlands
 T +31 596 636 911 | E offshore.commercial@wagenborg.com | wagenborg.com